

[Contraindication]

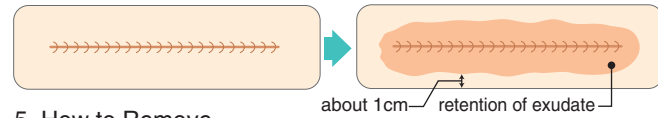
1. Usage
Do not re-use
2. Scope
 - 1) Don't use in wounds with possible infection (as this may worsen the situation)
 - 2) Patients with previous history of Keloid
 - 3) Don't use on open wounds where subcutaneous tissue, muscles, ligaments or bone surface is exposed.
 - 4) Don't use on ulcerated surfaces, burns of any degree, and compound fractures with potential possibility of infection.
[Do not use for the cases, 2) to 4), because safeness and effectiveness are not established.]

Instruction for Use

1. When the area affected is found to have infection, stop using KARAYAHESIVE, irrespective of the reason for such infection. And when skin reactions are noticed in the area of application, stop using KARAYAHESIVE and take necessary treatment.
2. During application, if any symptom of skin lesions appears, stop using KARAYAHESIVE and treat it properly.
3. Due to the adhesive property of KARAYAHESIVE, the area adjacent to the wound could become reddish; at times the exudates might cause skin maceration and may lead to skin planing. Carefully follow the wound for such symptoms and if any other reaction is observed, stop using KARAYAHESIVE and treat it properly.
4. This is not a wound closing device.

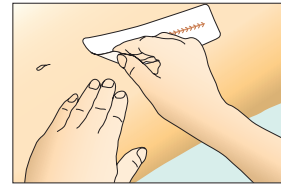
Usage Instructions

1. Selection of the size of KARAYAHESIVE
 - Choose a size larger than the wound and that covers adequate area of the surrounding normal skin all around.
2. Before Application
 - Thoroughly clean and sterilize the area of application.
 - Make the area of application dry before applying.
3. How to Apply
 - Peel off the release film carefully without touching the sterile inner surface and see that its centre portion covers the wound.
 - Depending upon necessity, reinforce the adhesiveness using adhesive tapes.
4. Exchange Timing
 - When the exudate that has pooled under KARAYAHESIVE has approached the margin with a gap of 1cm or less, replace with a new one.
 - When the applied KARAYAHESIVE has got peeled off or exudate has leaked, replace with a new one.



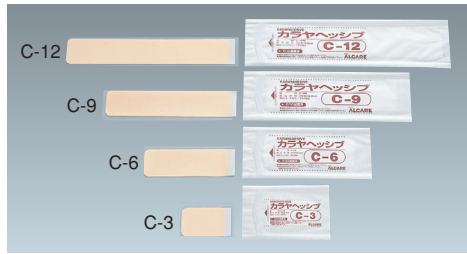
5. How to Remove

- Gently press the surrounding skin and peel off from one corner smoothly.



*When KARAYAHESIVE is found attached to skin or suture, apply normal saline and smoothly peel off.

Before actual use, please read the instruction manual.



KARAYAHESIVE

Type	Product Code No.	Specification		Contents Per Box
		Size	Base Material	
C-3	15181	7.5cm×5.0cm	Urethane film	10 pcs
C-6	15182	15.0cm×5.0cm		
C-9	15183	22.5cm×5.0cm		
C-12	15184	30.0cm×5.0cm		

EOG Sterilized

High Transparency Makes Follow-Up of the Wound Easier

Wound Care Solution

KARAYAHESIVE

Hydrocolloid Wound Dressing

ALCARE

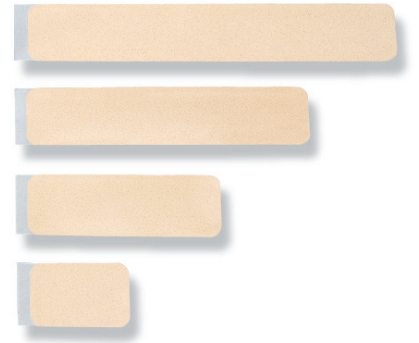
ALCARE Co., Ltd.
INTERNATIONAL SALES DIVISION

19F, Arcacentral Bldg.
1-2-1 Kinshi, Sumida-ku
Tokyo 130-0013, Japan
TEL:81-3-5611-7819
FAX:81-3-5611-7827
<http://www.alcare.co.jp/e>

ALCARE

Innovative Solutions for
Best Care

High Transparency and Absorption <KARAYAHESIVE> Providing an Ideal Healing Environment that Promotes the Efficiency of Treatment of Acute Wound



KARAYAHESIVE is a hydrocolloid wound dressing. Its basic principle is moisture based wound healing. It has benefits such as advancement of wound healing with its high transparency and absorption, it makes follow-up of the wound, like closed wound, easier. With reduction in the frequency of wound cleaning and dressing, it is advantageous not only with manpower but also economical due to lesser usage of the dressing material.



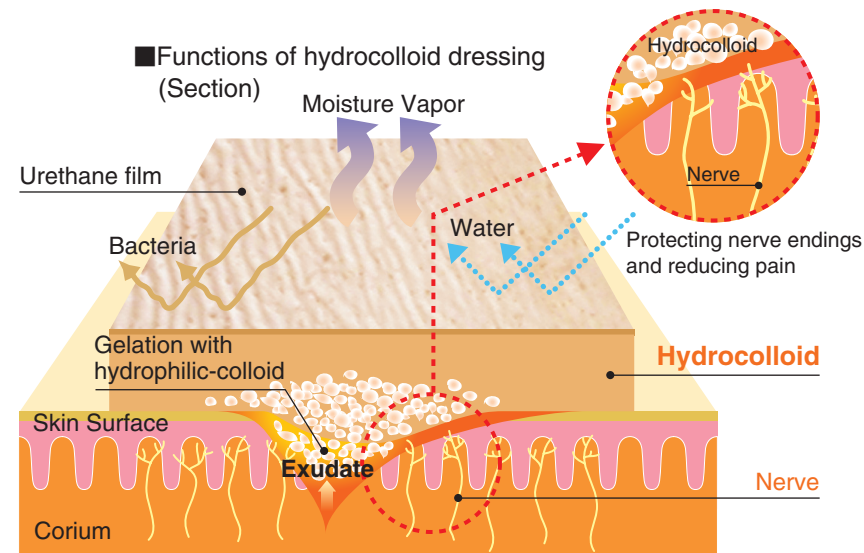
External Layer (Urethane film)
Adhesive Layer (Karayagel)
Release Paper

Application Acute Wound (Closed Wound, Skin Abrasion, Traumatic Skin Defect)

Maintaining Moderate Moist Environment for Wound Healing

- By forming soft hydrophilic-colloid gel on the wound surface with exudate, it maintains moist environment and promotes wound healing.
- By protecting wound, it eases up external stimulation and reduces pain.

Promoting Wound Healing



Moist Wound Healing

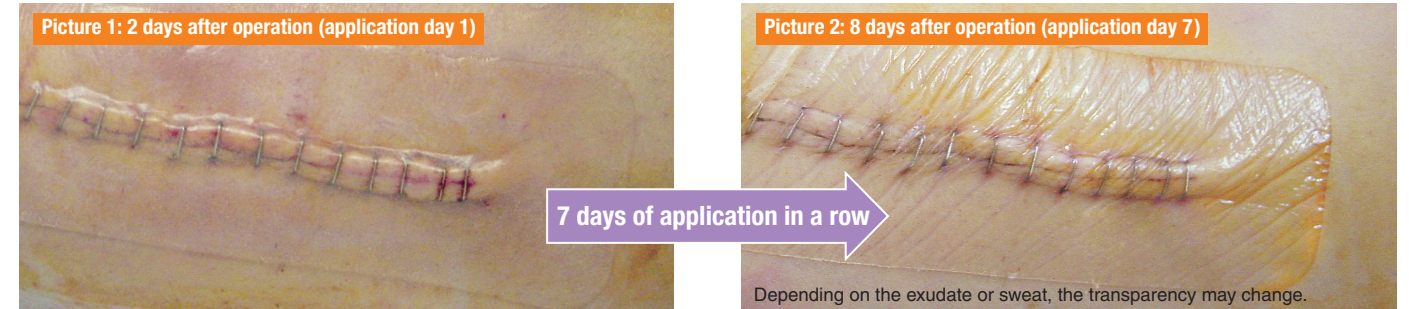
This is a theory of wound healing. By maintaining moderate wet environment, epidermal cell moves in the exudate along wound surface and speeds up the wound healing process than under a drying environment.

Transparency: the condition of underlying wound can be clearly observed

Easy Follow-Up

- The follow-up can be done without removing KARAYAHESIVE.
- With reduction of tasks for exchange gauze and usage of materials, the stress of patients will be also reduced.
- Depending on the exudate, the maximum duration of application can be about 1 week.

Case: A postoperative wound of Esophageal Cancer

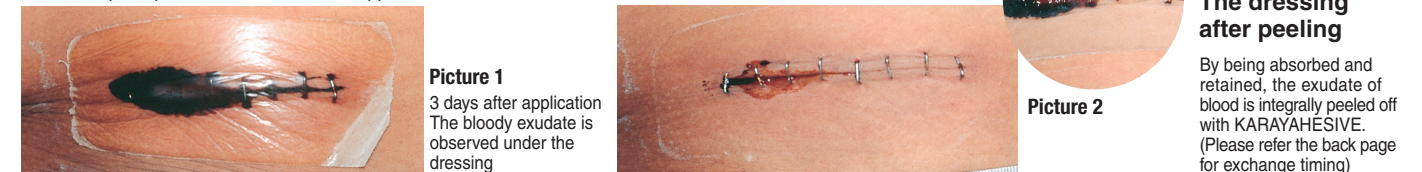


Moderate Exudate Absorption

Reduced Skin Maceration

- Due to the absorptive nature of adhesive layer, it absorbs accumulated exudate and reduces skin maceration.

Case: A postoperative wound of acute appendicitis



High Flexibility and Adhesiveness

Reduce Slippage / Uncomfortable Feeling

- By fitting with uneven wound surface, slippage or uncomfortable feeling is reduced.
- Fitting well with moving areas like joints.
- Prevents external contamination with high adhesiveness.

Case: A postoperative wound of artificial joint replacement for Osteoarthritis.

