



Cellcare 2-Cf

Type	Product Code No.	Specification Bag Size (Length X Width)	Contents Per Box
M	18281	210mm X 150mm	10pcs
L	18282	210mm X 150mm	10pcs

Closed



Cellcare 2-D cap

Type	Product Code No.	Specification Bag Size (Length X Width)	Contents Per Box
M	18911	346mm X 148mm	10pcs
L	18912	346mm X 148mm	10pcs
LL	18913	346mm X 148mm	10pcs
flesh color M	19441	346mm X 148mm	10pcs
flesh color L	19442	346mm X 148mm	10pcs

Outlet for Urinary Enzymes

Urology System Ostomy Appliances

1-Piece Ostomy System



Cellcare 1-U

2 to 5 Days Exchange

Type	Product Code No.	Specification Starter Hole Size	Max Available Size	Bag Size (Length X Width)	Contents Per Box
10 free-cut	18721	10mmφ	4~49mm (free-cut)	260mm X 150mm	10pcs
20	18722	20mmφ	14~19mm		
25	18723	25mmφ	19~24mm		
30	18724	30mmφ	24~29mm		
35	18725	35mmφ	29~34mm		
40	18726	40mmφ	34~39mm		

Outlet for Urine

Flat



Cellcare 1-Uc

2 to 5 Days Exchange

Type	Product Code No.	Specification Starter Hole Size	Max Available Size	Bag Size (Length X Width)	Contents Per Box
13	18731	13mmφ	9~12mm	260mm X 150mm	5pcs
16	18732	16mmφ	12~15mm		
19	18733	19mmφ	15~18mm		
22	18734	22mmφ	18~21mm		
25	18735	25mmφ	21~24mm		
28	18736	28mmφ	24~27mm		
32	18737	32mmφ	27~31mm		

Outlet for Urine

Convex

2-Piece Ostomy System



Cellcare 2-U

Type	Product Code No.	Specification Bag Size (Length X Width)	Contents Per Box
M	18681	260mm X 150mm	10pcs
L	18682	260mm X 150mm	10pcs

For the face plate, please refer to "Cellcare 2-F" and "Cellcare 2-Fc" face plate on the previous page.

Outlet for Urine

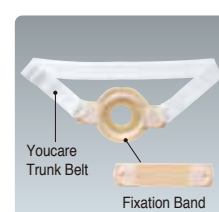
Accessories



Trunk Belt

Type	Product Code No.	Specification	Contents Per Box
—	12671	Waist Size 60~110cm (diameter of hole 63mmφ)	1 set

Applicable products : Cellcare 1-TD / TDc / C / D cap / Dc cap / U / Uc, Procure 1-D / C / U, Bioclose, Biourine Super, Biourine



Trunk Belt-II

Type	Product Code No.	Specification (Contents of set)	Contents Per Box
—	18061	Youcare Trunk Belt : 1 pc Fixation Band : 2 pcs	1set

Applicable products : Cellcare 2-F (excluding LL) / Fc, Youcare 2-F (excluding 65) / Fc / Fu / Fuc / Procure 2-F (excluding 70) / FA / Fc / FAURO / Fc URO

[Parts]

Product name	Product Code No.	Specification	Contents Per Box
Youcare Trunk Belt	15091	Waist Size 60~110cm	1pc
Fixation Band	18071	—	2pcs

* Face Plate is not included in Trunk Belt-II.



Cellcare-Wafer

Type	Product Code No.	Specification Length X Width	Contents Per Box
10	18391	100mm X 100mm	5pcs



Cellcare 2-BC

Type	Product Code No.	Specification Height of Dome	Contents Per Box
M	18291	20mm	2pcs
L	18292	20mm	2pcs

* C : closed c : convex D : drainable F : flange f : filter TD : tape drainable U : urostomy



ALCARE Co., Ltd.

International Sales Div.
19F, Arcacentral Bldg., 1-2-1 Kinshi, Sumida-ku, Tokyo 130-0013, Japan
TEL.+81-3-5611-7819 FAX.+81-3-5611-7827 MAIL. info@alcare.co.jp
www.alcare.co.jp/e

Printed in Japan
Sep. 2015

for Best Care **ALCARE**

Cellcare Ostomy System



Skin-care components “Ceramide” are blended together



Comfort obtained by encountering clean skin



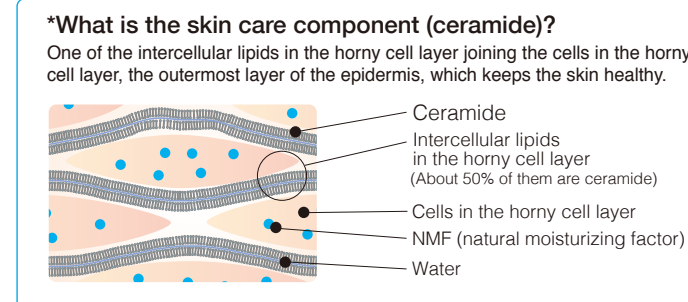
Skin with a moist feeling
Extra Skin Power

Goes beyond the limitation of polymers with dermatological science!

Former Skin Barrier protected the skin while wearing the stoma appliance by adjusting and arranging the composition and molding of a hydrophilic / hydrophobic polymer. When it was peeled off, however, the “tomorrow skin”, the immature horny cell layer, was liable to be exposed. ALCARE focused on the root cause of skin problems in ostomates. In order to resolve these problems, ALCARE applied a technique for compounding skin care components, “Remois”, and developed a new “Skin Barrier Plus” technique with the power of dermatological science.

“Ceramide” Skin-care componets “Ceramide” are blended together.

In “Skin Barrier Plus”, a skin care component (ceramide)* commonly found in the human horny cell layer was blended in the skin barrier.



Healthy and strong for the “Skin Power of the Tomorrow.”

Cellcare Series introduces the “skin power of the tomorrow” to the skin surrounding the stoma, which is always exposed to peeling stimuli and soiling, and liable to weakening. Moreover, it keeps the skin healthy so it is unlikely to cause trouble.



*“Remois” is the brand name of technology aiming at a more active skin care for skin liable to damage.

www.alcare.co.jp/e

A comfortable fit like skin



Softness and thinness for the first time. From the moment when it is attached, a sense of unity like our own skin.

A thinness of 1.5 mm at the center to 0.3 mm at the outer edge. Beveled thin at the edge, it fits the skin closely immediately after attachment, and it is very difficult to peel off. It has excellent flexibility, and elastically fits body movements such as bending down, going backward and twisting. It prevents the pain due to digging of the edge of the face plate on the skin.

For comfortable daily living, prevents leakage and odor.

Since it follows the skin softly, there are no gaps or peeling off due to wrinkles, so it reliably prevents leakage and odor. It reduces stress, and gives you comfort and a sense of ease as if you'd forgotten you're wearing it.

Flexiconvex with elastic adhesion.

(In Cellcare 1-TDc / Dc cap / Uc and Cellcare 2-Fc)

Even the convex type achieves the same softness as the skin. Due to the flexibility of the whole face plate, the convex surface adheres elastically to the abdomen and prevents leakage. It fits gently to body movements.

Joint

The joint where it fits smoothly to the stoma has increased flexibility.
※Not in Cellcare 1-TDc / Dc cap / Uc.



Convex plate
Softer than conventional plates, and improves adhesion to concave skin.

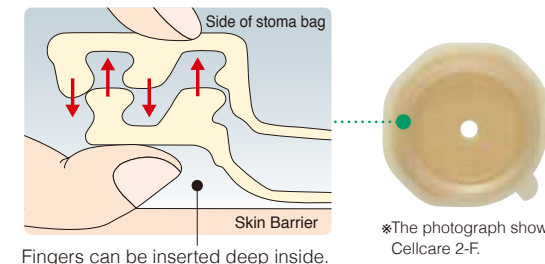
You won't even know you're wearing it

Joint ring which can be fit even with eyes closed.

(In all types of Cellcare 2)



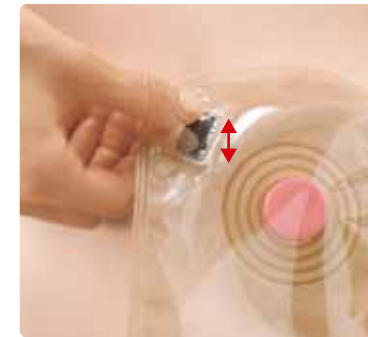
By overlapping and moving the joint ring between the face plate and stoma bag, fitting can be easily adjusted. It can be smoothly adjusted with the sensation of the hand alone without looking. Moreover, it does not compress the abdomen, and fits closely and surely.



※The photograph shows Cellcare 2-F.

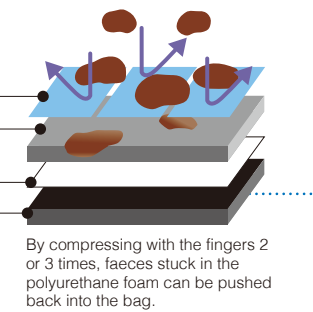
Aeration-restoring filter with superior deodorant effect and resistant to clogging.

(Except for Cellcare 1-U / Uc and Cellcare 2-U)



A unique four-layered structure maintains smooth degassing and high deodorant effect. Moreover, a new mechanism was adopted in which, even if it clogs, aeration can be recovered by pinching the filter with the hand several times. There is no fear of the stoma bag expanding and leaking odor.

PET film prevents infiltration of faeces in the first stage.
Polyurethane foam traps infiltrated faeces.
Air-permeable membrane, highly waterproof, even allows gas to pass through.
Activated charcoal fiber with powerful deodorant effect.



By compressing with the fingers 2 or 3 times, faeces stuck in the polyurethane foam can be pushed back into the bag.

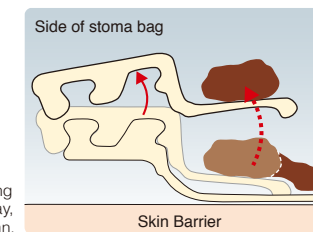
Circular anti-soiling cover which prevents soiling of the ring groove.

(In all types of Cellcare 2)



The joint ring of the stoma bag has a unique structure with a "circular anti-soiling cover." When the stoma bag is removed, faeces surrounding the joint ring on the face plate are taken away, so faeces are unlikely to remain in the area surrounding the joint ring, which prevents soiling of the groove.

Since faeces adhering to the area surrounding the joint ring on the face plate are taken away, soiling is unlikely to remain, and it stays clean.



※The photograph shows Cellcare 2-Df.

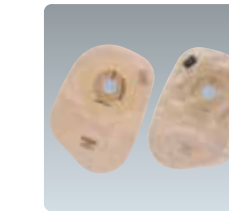
Cellcare Ostomy System

Digestive System Ostomy Appliances

1-Piece Ostomy System



Open-ended Clips
Flat



Closed
Flat



Optimal for Water Faeces
Convex

Cellcare 1-TD 2 to 5 Days Exchange

Type	Product Code No.	Starter Hole Size	Specification		Bag Size (Length X Width)	Contents Per Box
			Max Available Size	Max Available Size		
20 free-cut	18701	20mm φ	14~49mm (free-cut)		300mm X 150mm	10pcs
25	18702	25mm φ	19~24mm			
30	18703	30mm φ	24~29mm			
35	18704	35mm φ	29~34mm			
40	18705	40mm φ	34~39mm			
20 flesh color	19421	20mm φ	14~49mm (free-cut)			

Cellcare 1-C 1 Day Exchange

Type	Product Code No.	Starter Hole Size	Specification		Bag Size (Length X Width)	Contents Per Box
			Max Available Size	Max Available Size		
20 free-cut	18691	20mm φ	14~49mm (free-cut)	210mm X 150mm	10pcs	

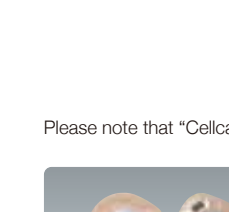
Cellcare 1-Dc cap 2 to 5 Days Exchange

Type	Product Code No.	Starter Hole Size	Specification		Bag Size (Length X Width)	Contents Per Box
			Max Available Size	Max Available Size		
22	18931	22mm φ	18~21mm		346mm X 148mm	5pcs
25	18932	25mm φ	21~24mm			
28	18933	28mm φ	24~27mm			
32	18934	32mm φ	27~31mm			
36	18935	36mm φ	31~35mm			
40	18936	40mm φ	35~39mm			

2-Piece Ostomy System



Flat

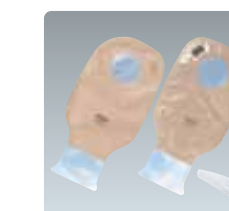


Open-ended Clips

Cellcare 2-F 2 to 5 Days Exchange

Type	Product Code No.	Starter Hole Size	Specification		Face Plate Size	Applicable Bag	Contents Per Box
			Max Available Size	Max Available Size			
M free-cut	18251	10mm φ	4~39mm (free-cut)		88mm X 98mm	M	5pcs
M16	18661	16mm φ	12~15mm				
M19	18662	19mm φ	15~18mm				
M22	18252	22mm φ	18~21mm				
M25	18253	25mm φ	21~24mm				
M28	18254	28mm φ	24~27mm				
L free-cut	18255	10mm φ	4~49mm (free-cut)		98mm X 98mm	L	5pcs
L32	18256	32mm φ	27~31mm				
L36	18257	36mm φ	31~35mm				
L40	18258	40mm φ	35~39mm				
LL free-cut	18259	10mm φ	4~69mm (free-cut)	119mm X 119mm			

Please note that "Cellcare 2-F" and "Cellcare 2-Fc" face plate are also suitable for urology system.



Open-ended Clips

Cellcare 2-Df

Type	Product Code No.	Specification		Contents Per Box
		Bag Size (Length X Width)	Bag Size (Length X Width)	
M	18271	300mm X 150mm	300mm X 150mm	10pcs
L	18272	300mm X 150mm	300mm X 150mm	10pcs
LL	18273	300mm X 150mm	300mm X 150mm	10pcs



Open-ended Clips
Convex



Optimal for Water Faeces
Flat

Cellcare 1-TDc 2 to 5 Days Exchange

Type	Product Code No.	Starter Hole Size	Specification		Bag Size (Length X Width)	Contents Per Box
			Max Available Size	Max Available Size		
22	18711	22mm φ	18~21mm		300mm X 150mm	5pcs
25	18712	25mm φ	21~24mm			
28	18713	28mm φ	24~27mm			
32	18714	32mm φ	27~31mm			
36	18715	36mm φ	31~35mm			
40	18716	40mm φ	35~39mm			

Cellcare 1-D cap 2 to 5 Days Exchange

Type	Product Code No.	Starter Hole Size	Specification		Bag Size (Length X Width)	Contents Per Box
			Max Available Size	Max Available Size		
20 free-cut	18921	20mm φ	14~49mm (free-cut)		346mm X 148mm	10pcs
25	18922	25mm φ	19~24mm			
30	18923	30mm φ	24~29mm			
35	18924	35mm φ	29~34mm			
40	18925	40mm φ	34~39mm			
70 free-cut	18926	10mm φ	4~69mm (free-cut)			
20 flesh color	19431	20mm φ	14~49mm (free-cut)			

Cellcare 2-Fc 2 to 5 Days Exchange

Type	Product Code No.	Starter Hole Size	Specification		Face Plate Size	Applicable Bag	Contents Per Box
			Max Available Size	Max Available Size			
M13	18387	13mm φ	9~12mm		100mm φ	M	5pcs
M16	18388	16mm φ	12~15mm				
M19	18389	19mm φ	15~18mm				
M22	18381	22mm φ	18~21mm				
M25	18382	25mm φ	21~24mm				
M28	18383	28mm φ	24~27mm				
L32	18384	32mm φ	27~31mm		110mm φ	L	5pcs
L36	18385	36mm φ	31~35mm				
L40	18386	40mm φ	35~39mm				

Cellcare 2-TDf

Type	Product Code No.	Specification		Contents Per Box
		Bag Size (Length X Width)	Bag Size (Length X Width)	
M	18671	300mm X 150mm	300mm X 150mm	10pcs
L	18672	300mm X 150mm	300mm X 150mm	10pcs
LL	18263	300mm X 150mm	300mm X 150mm	10pcs
flesh color	M	18671	300mm X 150mm	10pcs
	L	18672	300mm X 150mm	10pcs