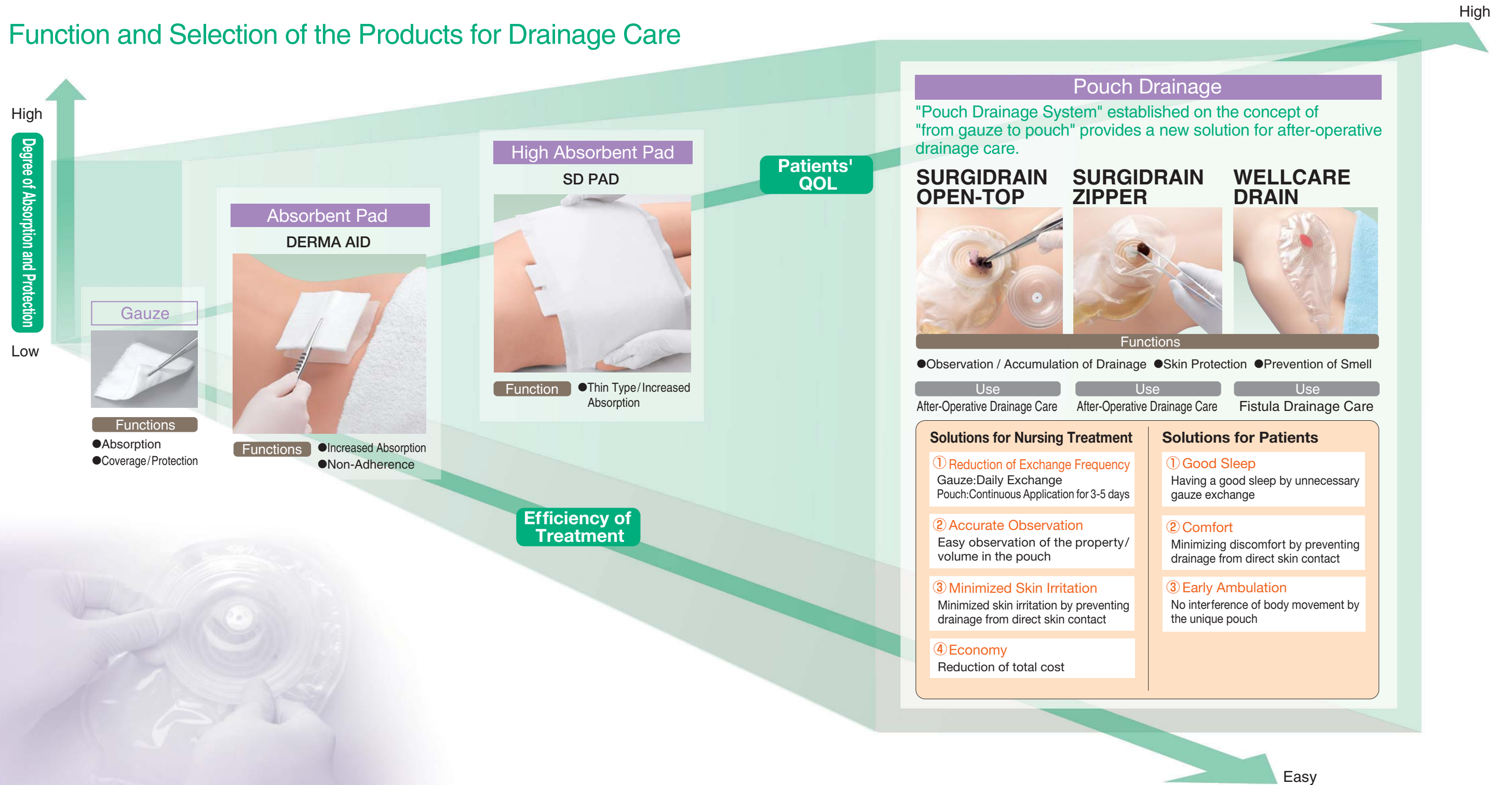


Drainage Care

The highly functional dressings as alternatives to gauze, the basic sanitary material, enable effective extracorporeal absorption and accumulation of drainage and promote patients' early recovery and efficiency of drainage care.

Function and Selection of the Products for Drainage Care

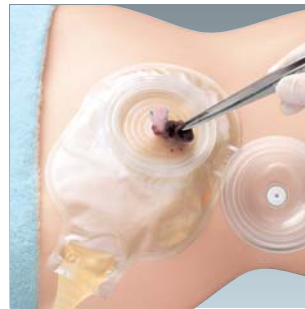


Drainage Care Products

■ Drainage Pouch ■ Drainage Pad ■ Absorbent Pad

ALCARE offers suitable products to support drainage care. Achieving better patients' QOL and efficient nursing treatment by reducing frequency of gauze exchange.

Drainage Pouch



SURGIDRAIN OPEN-TOP

Drainage after Operation

- By opening and closing the domed cap, it is possible to observe and treat the wound without removing the appliance.
- The domed cap can protect the wound from the external impact.
- A piece of drainage pouch can sufficiently manage 3 to 5 days drainage from the drain.

○ **γ-ray Sterilized** ○ **Skin Barrier** ○ **Water-Proof / Drip-Proof**

Type	Product Code No.	Specification		Contents Per Box
		Bag Size(L×W)	Max Available Size	
Post-Op-M	15671	205mm×130mm	50mm	2 pcs
S	15681	175mm×110mm	30mm	2 pcs
M	15682	205mm×130mm	50mm	2 pcs
L	15683	235mm×150mm	80mm×60mm	2 pcs
LL	15684	280mm×219mm	150mm×70mm	2 pcs



SURGIDRAIN ZIPPER

Drainage after Operation

- By opening and closing the zipper, it is possible to observe and treat the wound without removing the appliance.
- The flat form enables better fitting to body contours and reduces uncomfortable feeling during application.
- A piece of drainage pouch can sufficiently manage 3 to 5 days drainage from the drain.

○ **γ-ray Sterilized** ○ **Skin Barrier** ○ **Water-Proof / Drip-Proof**

Type	Product Code No.	Specification		Contents Per Box
		Bag Size(L×W)	Max Available Size	
S	15661	158mm×110mm	30mm	10 pcs
M	15662	188mm×130mm	50mm	10 pcs
L	15663	218mm×150mm	80mm×60mm	5 pcs



WELLCARE DRAIN

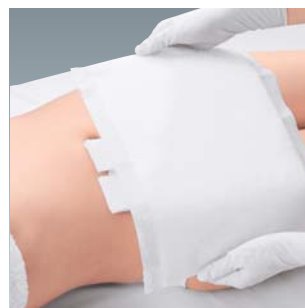
Fistula Drainage

- The thin flexible skin barrier for fistula has high pH buffering ability.
- The viscous drainage can be removed through the soft tap by milking the pouch.
- This product is available in three sizes to be applied to fistulae in different sizes.

○ **Skin Barrier** ○ **Water-Proof / Drip-Proof**

Type	Product Code No.	Specification		Contents Per Box
		Bag Size(L×W)	Max Available Size	
S	15831	160mm×95mm	35mm	5 pcs
M	15832	240mm×120mm	100mm×60mm	5 pcs
L	15833	280mm×160mm	120mm×100mm	5 pcs

Drainage Pad



SD PAD / SD PAD-WP

Drainage Pad

- The absorptivity is equivalent to about 40 gauze layers and its thickness is about half, which reduces uncomfortable feeling during application.
- A fibrous polymer absorber quickly absorbs drainage to reduce unpleasant feeling.
- Effective absorption reduces excessive moisture.

○ **γ-ray Sterilized** ○ **Water-Proof / Drip-Proof**

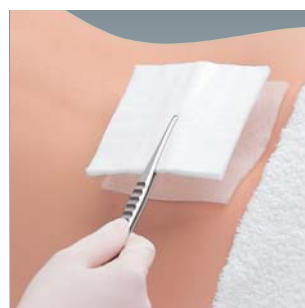
*Limited to WP(waterproof)type.

Type	Product Code No.	Specification		Contents Per Box
		Size	Weight Per Piece	
SD PAD 2	16751	150mm×150mm	Approx. 12g	50 pcs
SD PAD 3	16752	200mm×200mm	Approx. 21g	20 pcs
SD PAD-WP 3	16741	200mm×200mm	Approx. 20g	20 pcs
SD PAD-WP 4	16742	200mm×300mm	Approx. 30g	20 pcs

*Weight: Net weight of the pad excluding the sterilized bag.

*Do not apply this pad directly to the wound.

Absorbent Pad



DERMA AID

Absorbent Pad for Wound

- 18 times the absorption power of gauze. Can be used on high exudates wounds.
- Non-adhesive film on both sides of the dressing prevents damage to new cell growth when removed.
- Each pad/pack is sterilized.

○ **EOG Sterilized** ○ **Non-Adherent Pad**

Type	Product Code No.	Specification	Contents Per Box
1	11981	5.0cm×5.0cm	100 pcs
2	11982	5.0cm×7.5cm	100 pcs
4	11983	7.5cm×10.0cm	100 pcs
6	11984	10.0cm×10.0cm	100 pcs
8	11985	10.0cm×20.0cm	100 pcs

Drainage Care Products

■ Drainage Bag ■ Accessory ■ Skin Barrier for Post-PEG Treatment

Drainage Bag



DRAINAGE BAG

Bag for Drainage

- This bag can be connected to ALCARE's drainage pouches by simple handling and be used for accumulation of a large volume of drainage.
- A wide connector, which minimally narrows the tube diameter, assures smooth flow of drainage.

Type	Product Code No.	Specification		Contents Per Box
		Bag Size(L×W)	Capacity	
—	15841	320mm×230mm (tube length: 1m)	2000ml	5 pcs

Accessory



CONNECT CONE

Catheter Fixer

- Enable a secure fix of a catheter.
- Made from a flexible material which prevents the catheter from bending or twisting.
- By cutting the tip of the connector, it is possible to use catheters in the 6~40Fr range.

○ **EOG Sterilized**

Type	Product Code No.	Specification (Effective Catheter Size)	Contents Per Box
—	12061	6~40Fr	3 pcs



PROCARE SOFT WAFER STICK

Wafer Skin Barrier (Karaya Gum + Citrus Pectin)

- The stick-type skin barrier is enough flexible to be freely molded.
- This product assures the tight contact between the pouch and the uneven skin surface such as the peristoma skin area.

○ **Skin Barrier**

Type	Product Code No.	Specification (L×W)	Contents Per Box
Stick	15601	15mm×100mm	10 pcs



PROCARE POWDER

Powder Skin Barrier (Karaya Gum + Citrus Pectin)

- This is a mixed-type powder made of karaya gum and citrus pectin which are both excellent in their skin protecting quality.
- It fills the gap between the skin and the pouch to protect the skin.
- It is easy to apply, even to a small gap. The powder offers excellent water absorption.

○ **Skin Barrier**

Type	Product Code No.	Specification (Net Weight)	Contents Per Box
—	12611	50g	1 bottle

Skin Barrier for Post-PEG Treatment



PEG CARE

Skin Barrier for Post-PEG Treatment

- This skin barrier is exclusively used in the treatment after percutaneous endoscopic gastrostomy (PEG).
- This thin skin barrier flexibly fits the skin without causing stress on the PEG kit.
- The skin barrier having the excellent pH buffering ability can effectively control exudates.

○ **Skin Barrier**

Type	Product Code No.	Specification (Outer Diameter)	Contents Per Box
—	16261	50mmφ	20 pcs

ALCARE's "Solution"

for all the people hoping for health

For the medical staff and the patients who seek for Best Medical Care, ALCARE takes a proactive stance on a broad range of issues in various clinical fields.

Pursuing of promotion of patient's early recovery and treatment efficiency

During / After Operation Management Solution



Hydrocolloid Wound Dressing <KARAYAHESIVE> Drainage after Operation <SURGIDRAIN ZIPPER> Pad Attached Air Permeable / Waterproof Film Dressing <MULTI FIX-PAD> Adhesive Dressing for Wound Care <SILKYPORE DRESSING>

Providing optimum materials for prevention and treatment

Wound Care Solution



Absorbent Pad for Wound <DERMA AID> Floatation Pad for Decubitus Prevention <BONMAT>

Pursuing a total support of blood flow care

Compression & Graduation Care Solution



Medical Stocking <ANSILK-II PANTY HOSE> 100% Cotton Elastic Bandage <ELASCOT> Pad for Compression <CG PAD> Medical Stocking <ANSILK-PRO J CALF STOCKINGS>

Realizing best care by providing a large variety of products

Bandage Care Solution



Spandex Elastic Bandage <HIGHSPAN> Elastic Net Bandage <PRESNET> Elastic Adhesive Bandage <ELATEX> Flexible Adhesive Gauze Bandage <SILKYPORE> Air Permeable Waterproof Elastic Adhesive Bandage <DERMAPORE>

Supporting improvement of ostomates' QOL

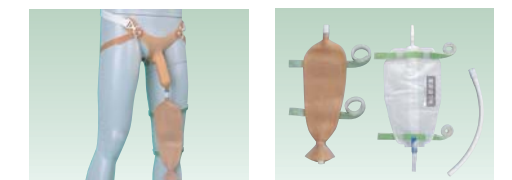
Stoma Care Solution



Open-Ended Bag for Colostomy / Ileostomy <LAPACK SUPER G> Open-Ended Bag for Colostomy / Ileostomy <POSPACK-K> One-Piece Ostomy System <YOU CARE D> Two-Piece Ostomy System <PROCARE 2 FA, PROCARE 2 C>

Improving patients' QOL by providing better continence care

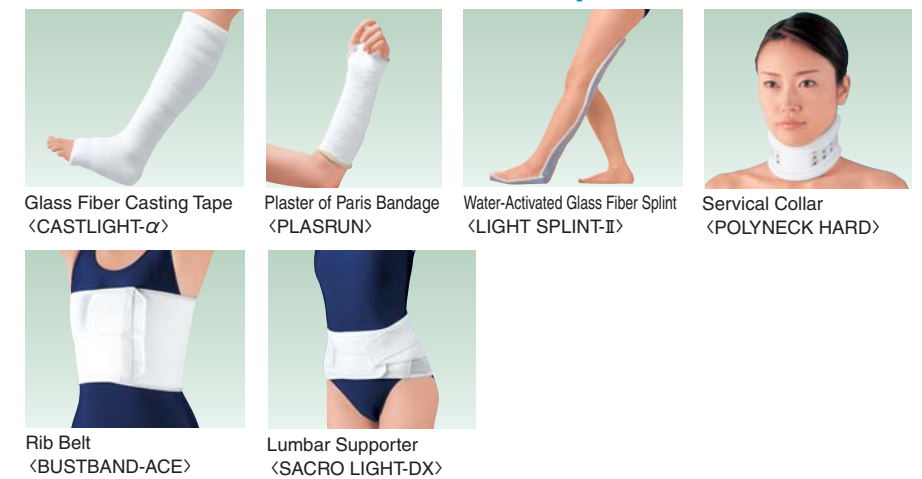
Incontinence Care Solution



Male Incontinence Appliance <YUNIBON> Male Incontinence Appliance <LEG BAG>

Optimum products for the period from treatment to rehabilitation

Orthopedic Care Solution



Glass Fiber Casting Tape <CASTLIGHT-α> Plaster of Paris Bandage <PLASRUN> Water-Activated Glass Fiber Splint <LIGHT SPLINT-II> Servical Collar <POLYNECK HARD> Rib Belt <BUSTBAND-ACE> Lumbar Supporter <SACRO LIGHT-DX>

Protecting athletes from being injured

Sports Care Solution



<ANKLE GUARD EX> <LUMBAR GUARD> <KNEE GUARD> <REGUARD SKIN CARE>

Index

A	
ANSILK-PRO J CALF STOCKINGS.....	6
ANSILK-PRO J STOCKINGS.....	6
C	
CONNECT CONE.....	14
D	
DERMA AID.....	10,13
DERMAPORE.....	10
DERMAPORE DRESSING.....	9
DRAINAGE BAG.....	14
E	
ELASCOT.....	6
K	
KARAYAHESIVE.....	9
M	
MULTI FIX.....	10
MULTI FIX-PAD.....	9
P	
PEG CARE.....	14
PROCARE POWDER.....	14
PROCARE SOFT WAFER STICK.....	14
S	
SD PAD/SD PAD-WP.....	13
SILKYPORE.....	10
SILKYPORE DRESSING.....	9
SURGIDRAIN OPEN-TOP.....	13
SURGIDRAIN ZIPPER.....	13
W	
WELLCARE DRAIN.....	13

